

Barnabas Court

Castle Street, Paisley

A development of twenty seven super energy efficient, eco friendly
apartments in the heart of the university district of Paisley

In today's world, caring about the environment and taking action to protect the planet we live on, is not just the work of campaigners, but of each and every one of us...

It can be small things like making sure you recycle or don't leave you appliances on standby, or it can be more significant, like choosing to buy a new home that is eco-friendly, energy efficient and built using a sustainable building method. When you buy a home at Barmabas Court you are making the choice to buy what's best for you and the environment around you.





Braehead Shopping

Barnabas Court

Having retained its individual style and identity, Paisley offers an excellent quality of life within a vibrant and welcoming environment...

As Scotland's largest town, Paisley has a range of leading High Street retailers and local, independent shops. Shopping and leisure is catered for at Abbotsinch Retail Park situated off Renfrew Road and the Phoenix Retail and Leisure Park where attractions include the Showcase Cinema and several restaurants.

Comprehensive shopping and leisure facilities are offered at Braehead Shopping Centre and Retail Park. Braehead Arena and the recently opened Xscape only a short drive away on the banks of the Clyde.



Paisley Town Hall

Paisley Town Centre



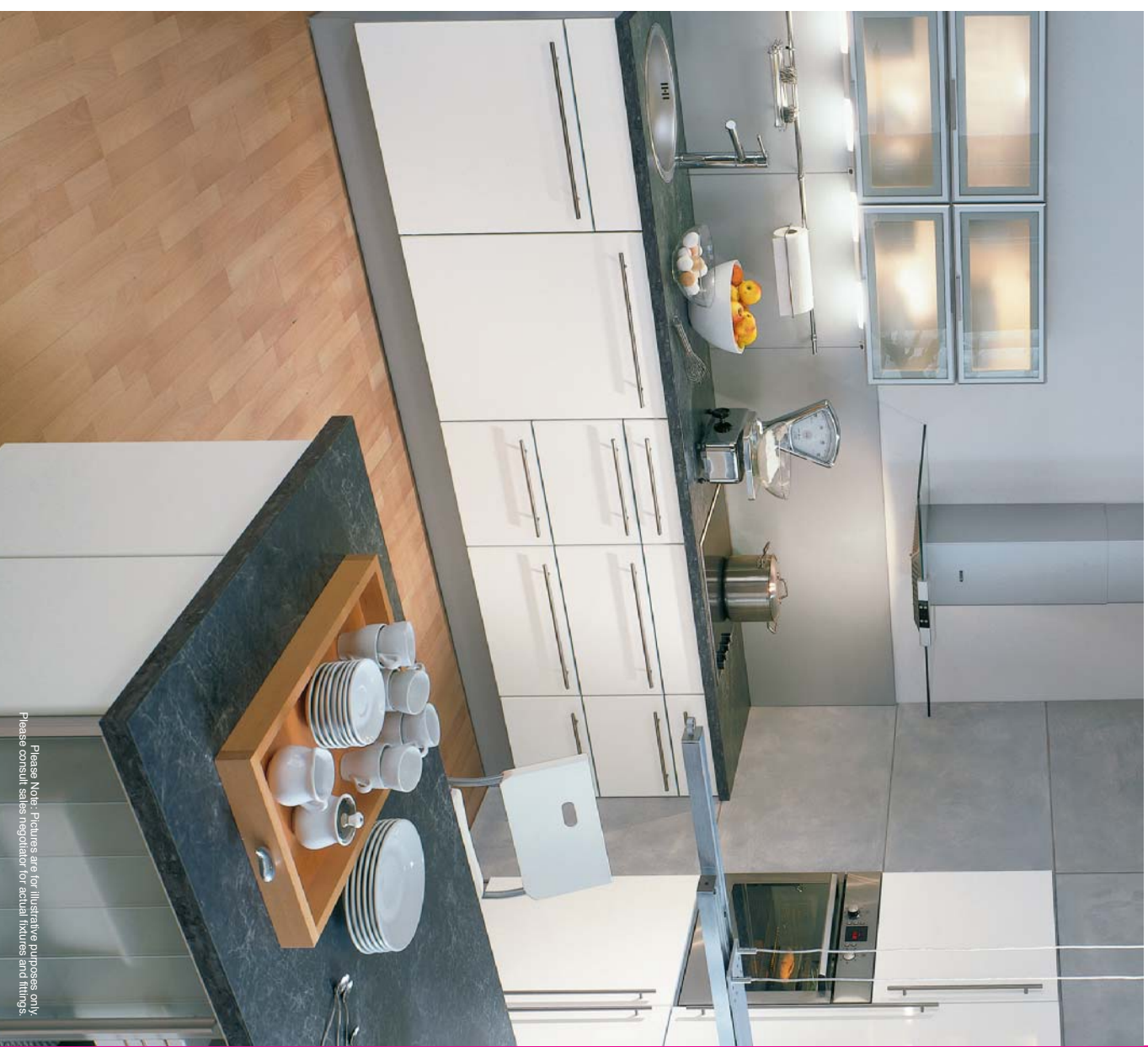
Paisley Abbey

Barnabas Court

With quality, stylish contemporary fixtures and fittings used throughout, you can be assured of a luxurious life at Barnabas Court...

Your kitchen is a cleverly designed space fitted with contemporary appliances giving you the perfect balance between design and technology.

You will recognise immediately that we put more into the design and build of your kitchen to ensure that you get more out of it! Your kitchen will be the stylish heart of your home.



Please Note: Pictures are for illustrative purposes only.
Please consult sales negotiator for actual fixtures and fittings.



Your bathroom has been designed to look elegantly simple. White sanitaryware and chrome fittings create a stylish minimal look. This helps to create a spacious bathing and showering experience.

Now you can enjoy effortless luxury and refreshing comfort every day...

Specification

External Specification

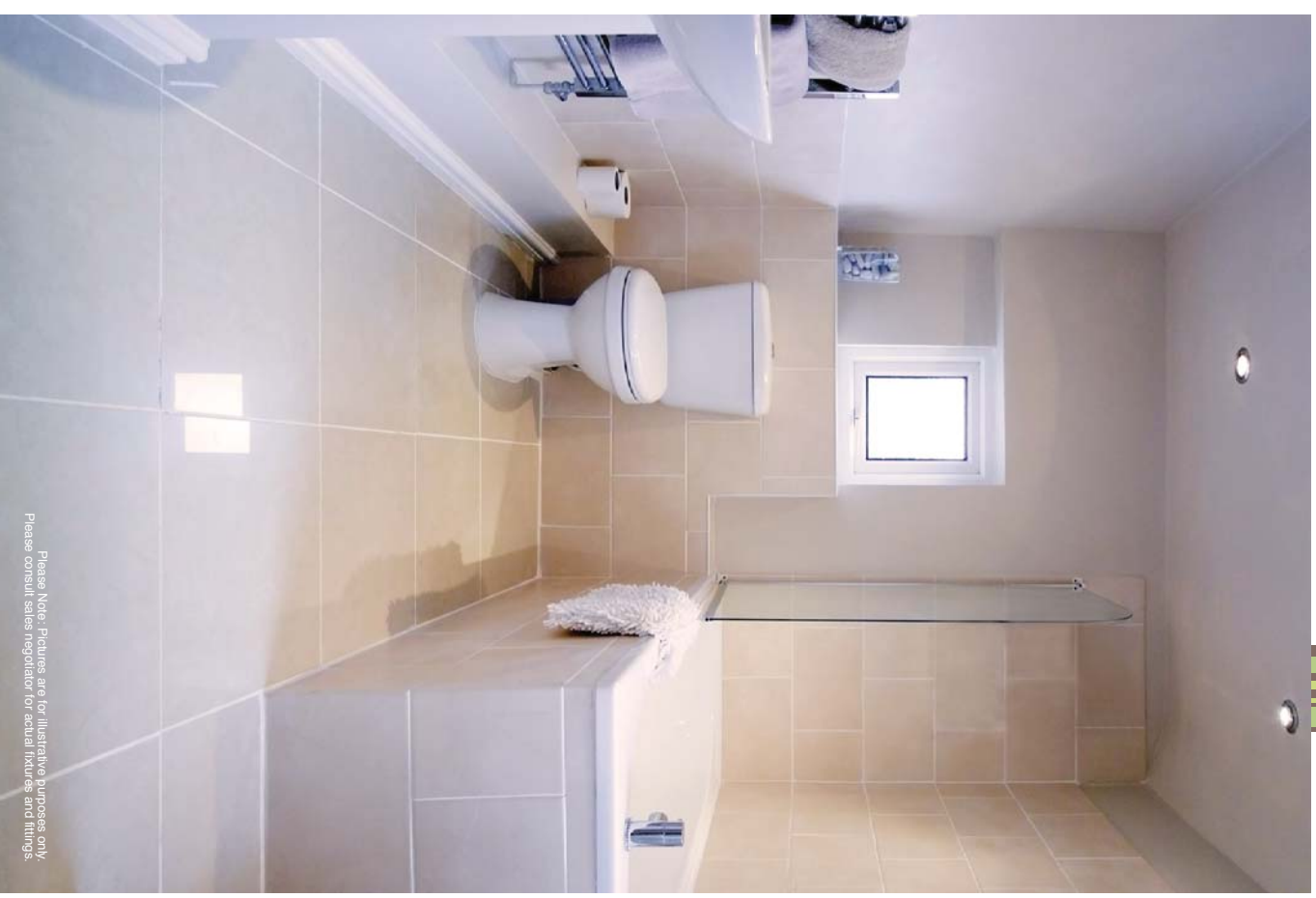
- Audio security entrance system
- Floor coverings to stairs and landings

Internal Specification

- High performance apartment door with three point locking system, door viewer and security chain
- Carpets and floor coverings throughout
- Emulsion finish to walls and ceilings
- Gloss finish to woodwork
- Sliding mirror wardrobe doors with internal shelf and hanging rail
- Choice of kitchens* with stainless steel electric hob, fan assisted built under oven and chimney style extractor hood
- Washing machine/dryer and fridge/freezer
- Choice of tiling* in selected areas in kitchens, bathrooms, and en-suites
- Resin shower tray with chrome framed glazed shower enclosure to en-suite
- Chrome plated thermostatic shower with multi spray head
- Economy wet electric central heating system with hot water cylinder, heating boiler and thermostatic valves to radiators
- Sky plus point to lounge and bedrooms
- Phone point to lounge
- Shower screen and chrome plated thermostatic shower over bath in one Bedroom flats
- High performance UPVC double glazed windows

Communal Gardens

- Private off street courtyard parking with monoblock finish
 - Perimeter fencing, lighting and landscaping to communal areas
- (* from the builders selected range)



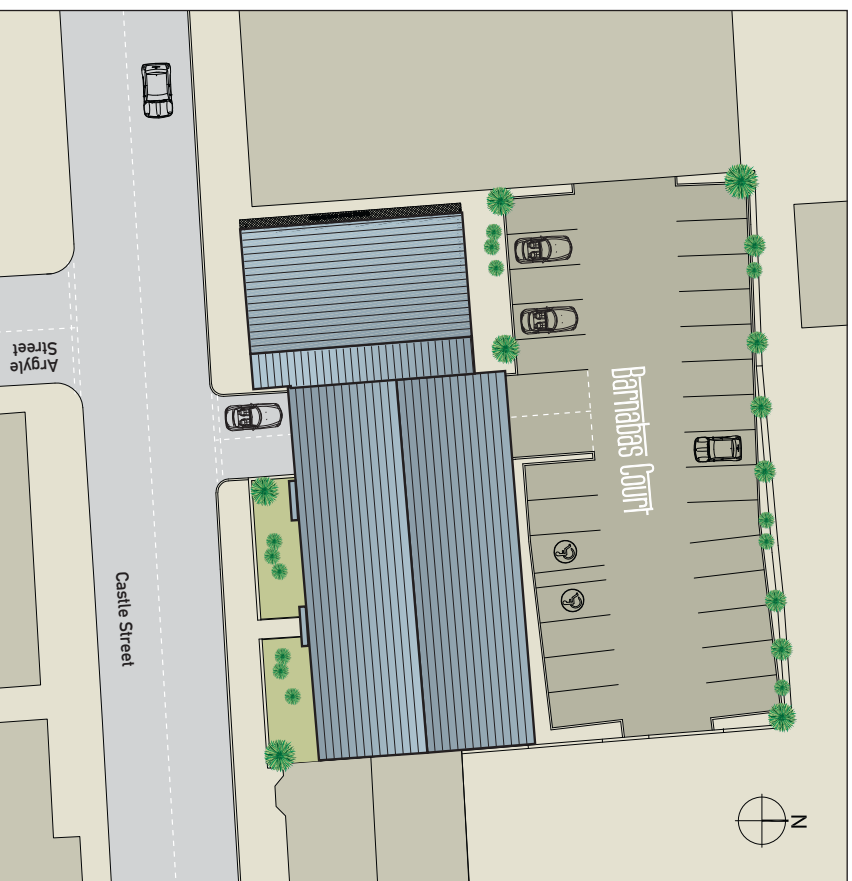
Please Note: Pictures are for illustrative purposes only. Please consult sales negotiator for actual fixtures and fittings.

Barnabas Court

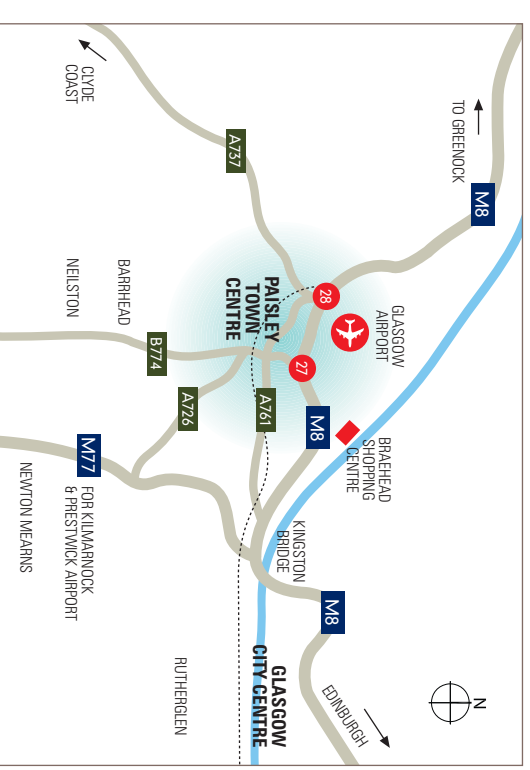
Eco Friendly...

Barnabus Court is constructed using the latest modern eco-friendly building method. This sustainable, modern technique ensures that your home will be warmer in winter and cooler in summer. With walls cast in 'PolySteel', your new apartment will be quieter, cleaner and greener, allowing you to live in a strong, safe and extremely energy efficient building and reduce your own carbon footprint.

Site Plan...



Location...

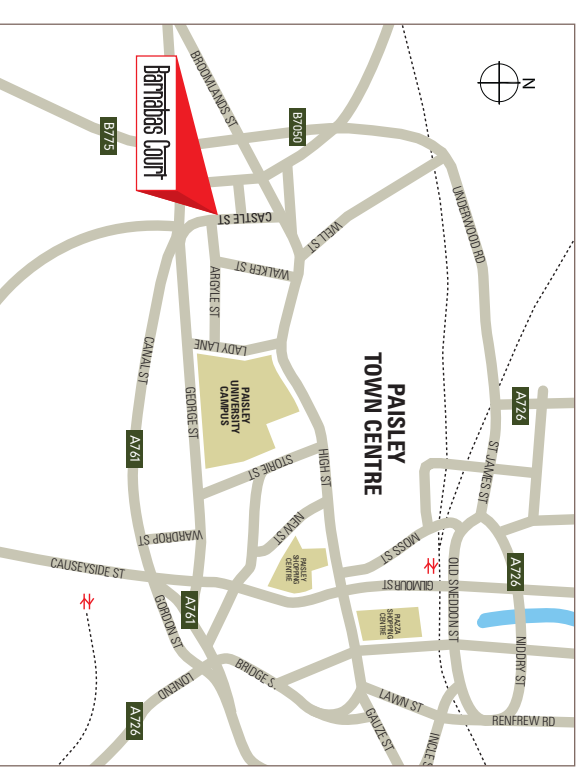


DIRECTIONS: FROM PAISLEY

From Countrywide's office on Causeyside Street proceed south along Causeyside Street and turn right at the second set of traffic lights into Canal Street. Turn right almost immediately into Wardrop Street and then left at the junction into George Street. Continue along George Street which continues into Castle Street as the road bends to the right. The development is then found on your left hand side.

DIRECTIONS: FROM GLASGOW

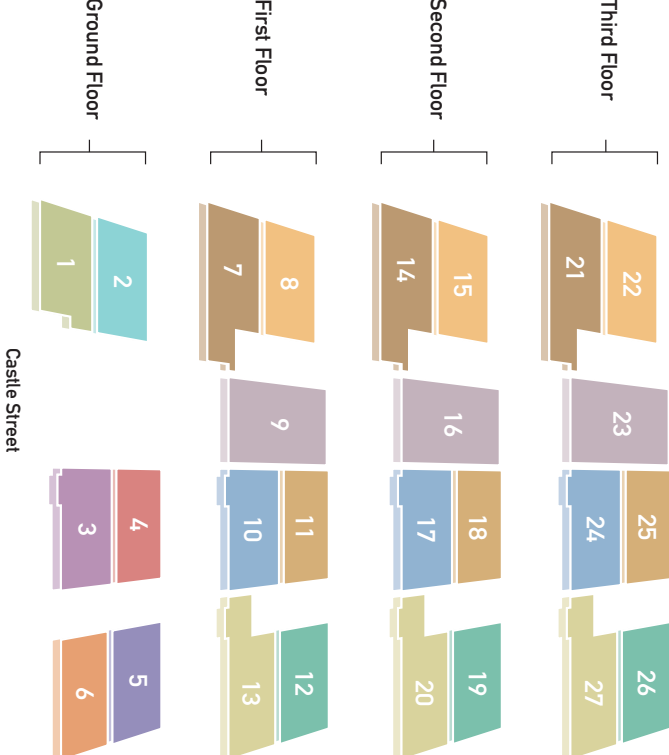
Travelling west on the M8 from Glasgow city centre exit at junction 27 Arkleston Interchange. At the roundabout take the first exit into Renfrew Road and head towards Paisley, veering left under the railway bridge towards the traffic lights at the junction with Glasgow Road. Proceed straight through into Mill Street (A761) and continue into Gordon Street and then straight through the traffic lights again into Canal Street. Turn right almost immediately into Wardrop Street and then left at the junction into George Street. Continue along George Street, passing the university on the right hand side, which continues into Castle Street as the road bends to the right. The development is then found on your left hand side.



Apartment Key

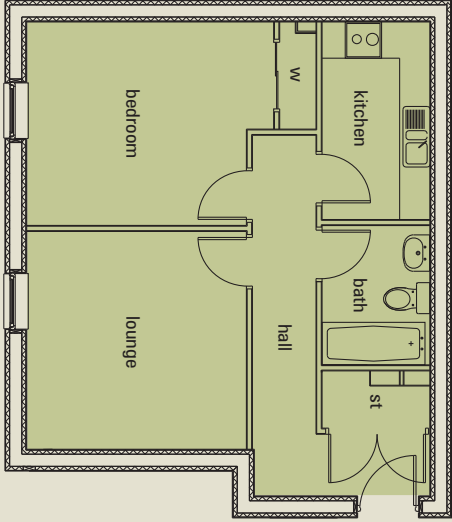
- Apartment Type A - 1 bedroom apartment
- Apartment Type B - 2 bedroom apartment with en-suite
- Apartment Type C - 2 bedroom apartment with en-suite
- Apartment Type D - 2 bedroom apartment with en-suite
- Apartment Type E - 1 bedroom apartment
- Apartment Type F - 2 bedroom apartment with en-suite
- Apartment Type G - 2 bedroom apartment with en-suite
- Apartment Type H - 3 bedroom apartment with en-suite
- Apartment Type I - 2 bedroom apartment with en-suite
- Apartment Type J - 2 bedroom apartment with en-suite
- Apartment Type K - 2 bedroom apartment with en-suite
- Apartment Type L - 2 bedroom apartment with en-suite
- Apartment Type M - 3 bedroom apartment with en-suite

Apartment Locator



Floorplans

Sizes are based on maximum measurements and are for indication only. Any intending purchaser should satisfy themselves by inspection or otherwise as to their accuracy.



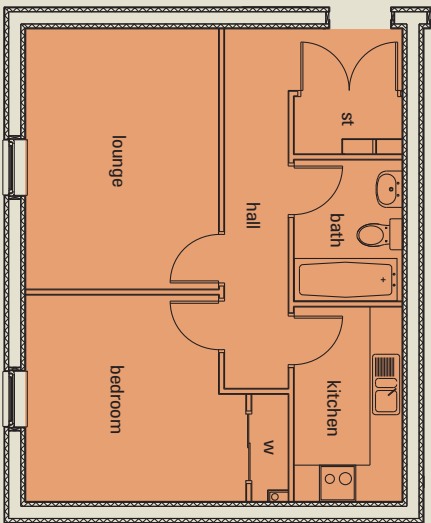
Apartment Type A

1 bedroom apartment
Plot 1

Dimensions	metric	imperial
lounge:	3.7m x 3.6m	12'1" x 11'8"
kitchen:	3.2m x 1.8m	10'4" x 5'9"
bathroom:	3.6m x 3.3m	11'8" x 10'8"
bedroom :	2.3m x 1.8m	7'5" x 5'9"

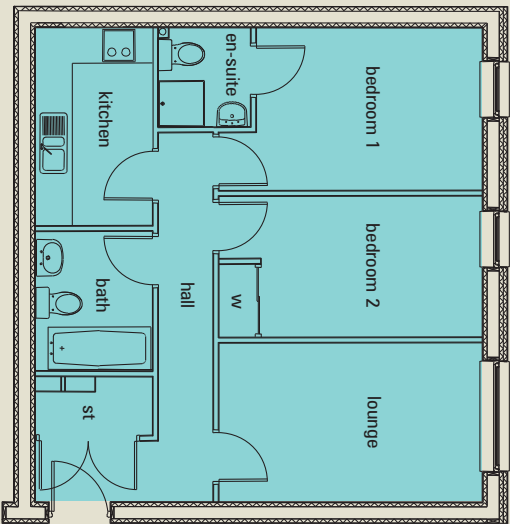
Floorplans

Sizes are based on maximum measurements and are for indication only. Any intending purchaser should satisfy themselves by inspection or otherwise as to their accuracy.



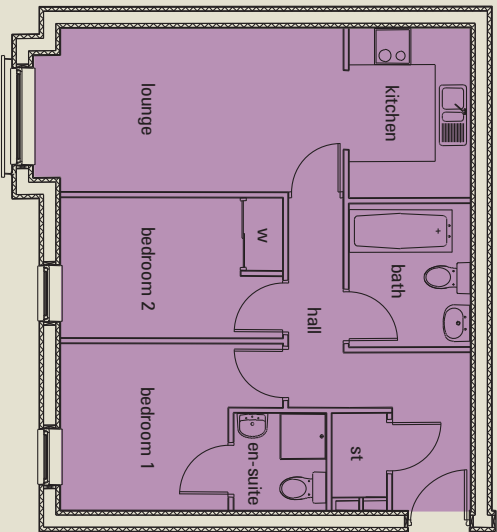
Apartment Type B
1 bedroom apartment
Plot 6

Dimensions	metric	imperial
lounge:	4.2m x 3.2m	13'7" x 10'4"
kitchen:	3.2m x 1.8m	10'4" x 5'9"
bathroom:	3.4m x 3.2m	11'1" x 10'4"
bedroom :	2.3m x 1.8m	7'5" x 5'9"



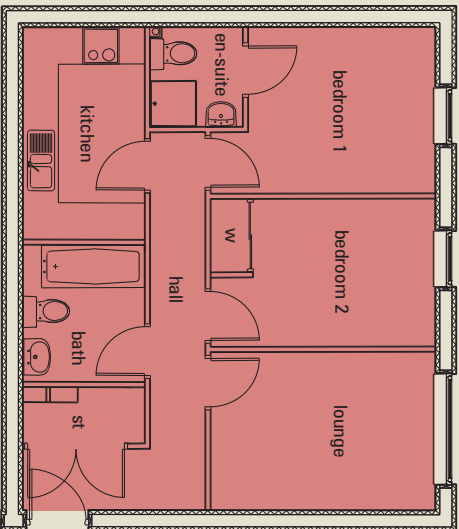
Apartment Type C
2 bedroom apartment
Plot 2

Dimensions	metric	imperial
lounge:	4.2m x 2.6m	13'7" x 8'5"
kitchen:	3.3m x 1.8m	10'8" x 5'9"
bedroom 1:	3.9m x 2.7m	12'7" x 8'8"
en-suite:	1.6m x 1.4m	5'2" x 4'5"
bedroom 2:	3.6m x 2.3m	11'8" x 7'5"
bathroom:	2.3m x 1.8m	7'5" x 5'9"



Apartment Type D
2 bedroom apartment
Plot 3

Dimensions	metric	imperial
lounge:	5.3m x 2.8m	17'3" x 9'1"
kitchen:	2.8m x 1.8m	9'1" x 5'9"
bedroom 1:	2.8m x 2.7m	9'1" x 8'8"
en-suite:	1.6m x 1.5m	5'2" x 4'9"
bedroom 2:	3.0m x 2.3m	9'8" x 7'5"
bathroom:	2.3m x 1.8m	7'5" x 5'9"

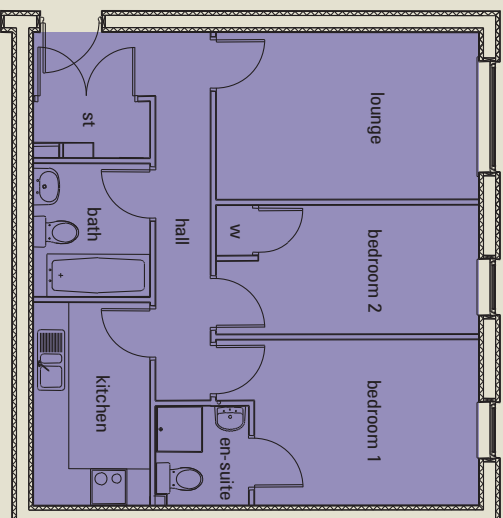


Apartment Type E

2 bedroom apartment

Plot 4

Dimensions	metric	imperial
lounge:	3.7m x 2.7m	12'1" x 8'8"
kitchen:	3.5m x 1.8m	11'4" x 5'9"
bedroom 1:	3.2m x 2.7m	10'4" x 8'8"
en-suite:	1.6m x 1.6m	5'2" x 5'2"
bedroom 2:	3.1m x 2.4m	10'1" x 7'8"
bathroom:	2.3m x 1.8m	7'5" x 5'9"

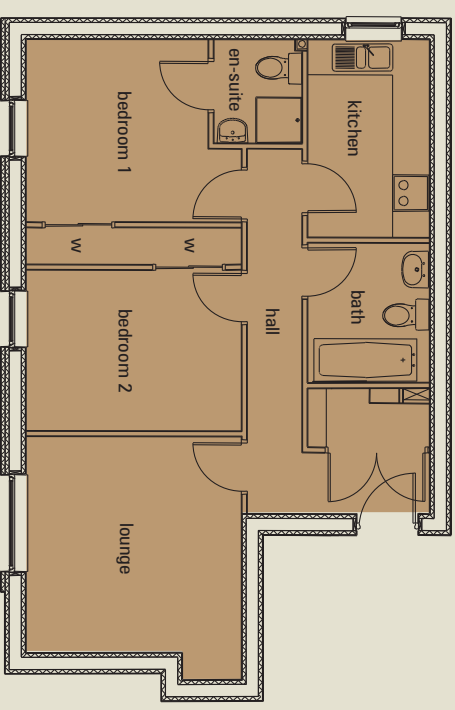


Apartment Type F

2 bedroom apartment

Plot 5

Dimensions	metric	imperial
lounge:	2.8m x 4.3m	9'1" x 14'1"
kitchen:	3.2m x 1.7m	10'4" x 5'5"
bedroom 1:	3.7m x 2.7m	12'1" x 8'8"
en-suite:	1.6m x 1.5m	5'2" x 4'9"
bedroom 2:	3.6m x 2.1m	11'8" x 6'8"
bathroom:	2.3m x 1.8m	7'5" x 5'9"



Apartment Type G

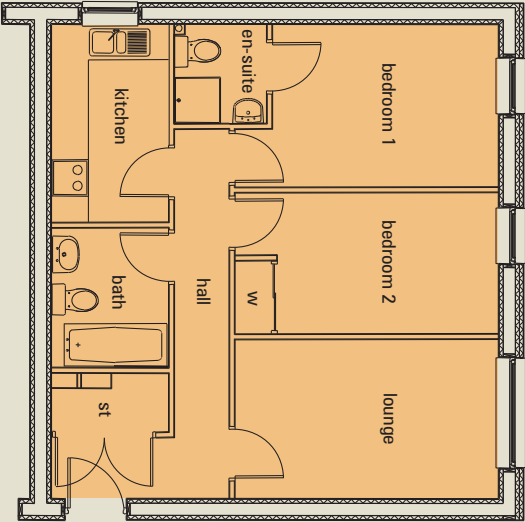
2 bedroom apartment

Plot 7, 14, 21

Dimensions	metric	imperial
lounge:	3.6m x 3.5m	11'8" x 11'4"
kitchen:	3.3m x 2.0m	10'8" x 6'5"
bedroom 1:	3.0m x 3.0m	9'8" x 9'8"
en-suite:	1.8m x 1.4m	5'9" x 4'5"
bedroom 2:	3.5m x 2.7m	11'4" x 8'8"
bathroom:	2.3m x 2.0m	7'5" x 6'5"

Floorplans

Sizes are based on maximum measurements and are for indication only. Any intending purchaser should satisfy themselves by inspection or otherwise as to their accuracy.



Apartment Type H

2 bedroom apartment
Plot 8, 15, 22

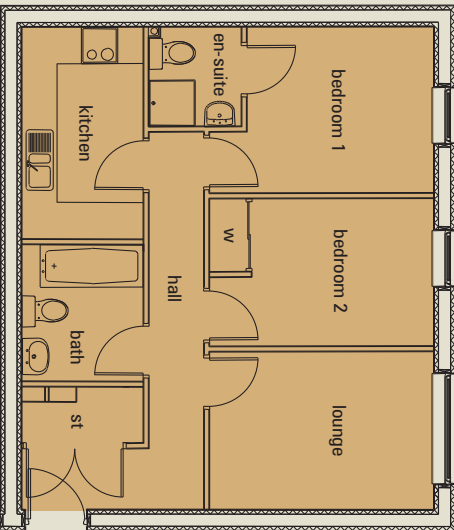
Dimensions	metric	imperial
lounge:	4.4m x 2.6m	14'4" x 8'5"
kitchen:	2.9m x 1.9m	9'5" x 6'2"
bedroom 1:	3.8m x 2.8m	12'4" x 9'1"
en-suite:	1.7m x 1.5m	5'5" x 4'9"
bedroom 2:	3.8m x 2.3m	12'4" x 7'5"
bathroom:	2.3m x 1.9m	7'5" x 6'2"



Apartment Type I

2 bedroom apartment
Plot 10, 17, 24

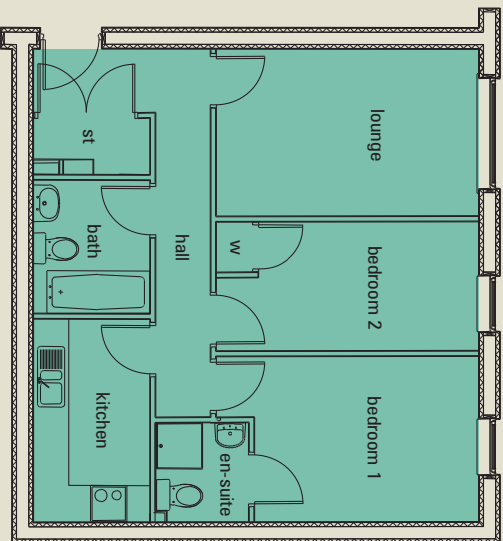
Dimensions	metric	imperial
lounge:	5.2m x 2.7m	17'0" x 8'8"
kitchen:	2.8m x 2.0m	9'1" x 6'5"
bedroom 1:	2.9m x 2.8m	9'5" x 9'1"
en-suite:	1.6m x 1.5m	5'2" x 4'9"
bedroom 2:	3.7m x 2.3m	12'1" x 7'5"
bathroom:	2.5m x 2.0m	8'2" x 6'5"



Apartment Type J

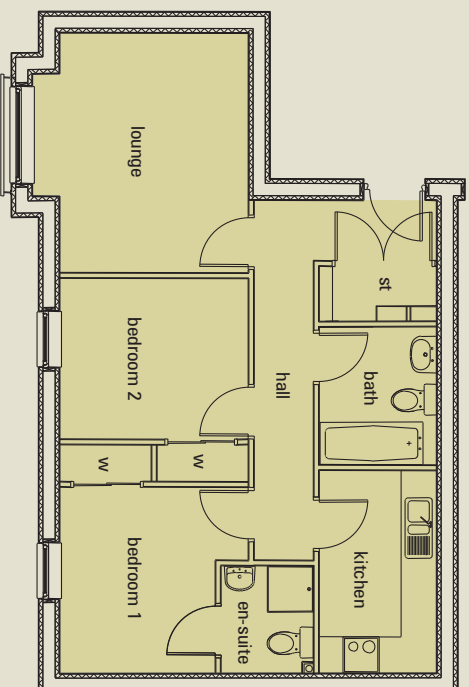
2 bedroom apartment
Plot 11, 18, 25

Dimensions	metric	imperial
lounge:	3.7m x 2.7m	12'1" x 8'8"
kitchen:	3.7m x 2.0m	12'1" x 6'5"
bedroom 1:	3.1m x 2.7m	10'1" x 8'8"
en-suite:	1.7m x 1.5m	5'5" x 4'9"
bedroom 2:	3.7m x 2.5m	12'1" x 8'2"
bathroom:	2.3m x 2.0m	7'5" x 6'5"



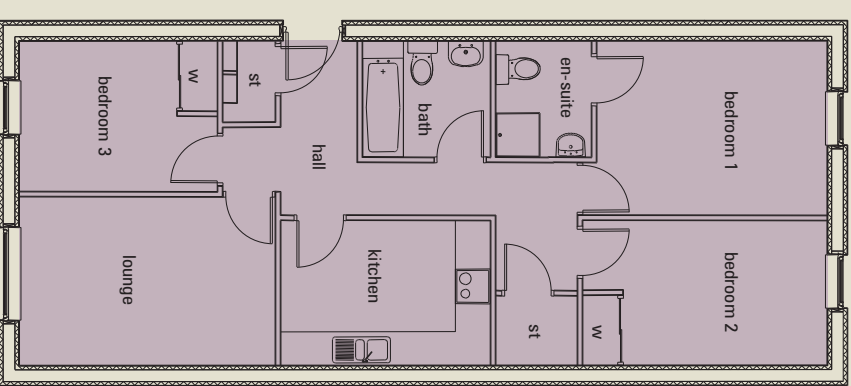
Apartment Type K
2 bedroom apartment
Plot 12, 19, 26

Dimensions	metric	imperial
lounge:	4.3m x 2.8m	14'1" x 9'1"
kitchen:	3.3m x 1.9m	10'8" x 6'2"
bedroom 1:	3.8m x 2.7m	12'4" x 8'8"
en-suite:	1.7m x 1.5m	5'5" x 4'9"
bedroom 2:	4.3m x 2.1m	14'1" x 6'8"
bathroom:	2.2m x 1.9m	7'2" x 6'2"



Apartment Type L
2 bedroom apartment
Plot 13, 20, 27

Dimensions	metric	imperial
lounge:	3.9m x 3.5m	12'7" x 11'4"
kitchen:	3.4m x 1.9m	11'1" x 6'2"
bedroom 1:	3.0m x 2.6m	9'8" x 8'5"
en-suite:	1.7m x 1.5m	5'5" x 4'9"
bedroom 2:	3.1m x 2.6m	10'1" x 8'5"
bathroom:	2.3m x 1.9m	7'5" x 6'2"



Apartment Type M
3 bedroom apartment
Plot 9, 16, 23

Dimensions	metric	imperial
lounge:	4.4m x 2.9m	14'4" x 9'5"
kitchen:	3.6m x 2.5m	11'8" x 8'2"
bedroom 1:	4.0m x 3.0m	13'1" x 9'00"
en-suite:	2.0m x 1.6m	6'5" x 5'2"
bedroom 2:	3.6m x 2.5m	11'8" x 8'2"
bedroom 3:	3.4m x 2.6m	11'1" x 8'5"
bathroom:	2.3m x 2.0m	7'5" x 6'5"



Countrywide

Land & New Homes

For further information contact our Paisley Branch:

5 Causeyside Street, Paisley PA1 1UW

Telephone: 0141 848 1155

Email: paisley@countrywidenorh.co.uk

Web: www.countrywidescotland.co.uk / Web: www.rightmove.co.uk

GLOBE
H O M E S
www.citygateglobe.co.uk



These particulars are for guidance only. They are prepared and issued in good faith and are intended to give a fair description of the property but do not constitute part of an offer or contract. Any description or information given should not be relied on as a statement or representation of fact or that the property or its services are in good condition. Any reference to alterations to, or use of, any part of the property is not a statement that any necessary planning, building regulations or other consent has been obtained. These matters must be verified by any intending purchaser. Neither Countrywide nor the Vendor of the property accept responsibility for any error these particulars may contain however caused. Any intending purchaser must therefore satisfy themselves by inspection or otherwise as to their correctness. All photographs shown are indicative of the quality and style of the Development and location, and do not necessarily represent the actual fittings and furnishings at this Development. All interested parties should consult the Sales Executive for the most up-to-date information. All plan dimensions shown are based on maximum measurements.